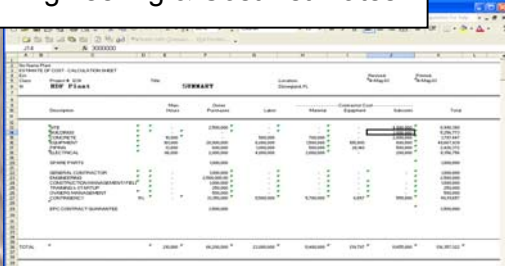


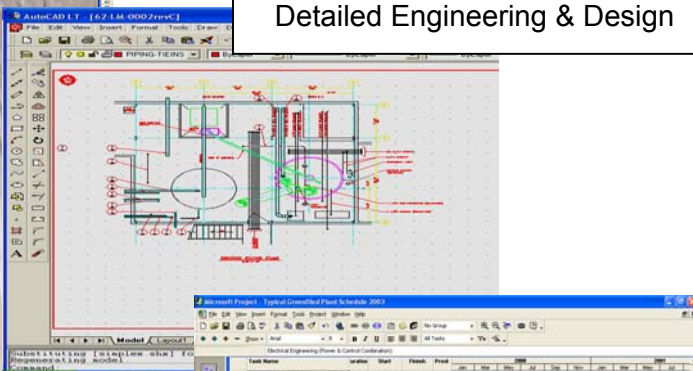
# WOOD-PLASTIC COMPOSITES (WPC)

P  
R  
O  
J  
E  
C  
T  
  
E  
X  
P  
E  
R  
I  
E  
N  
C  
E

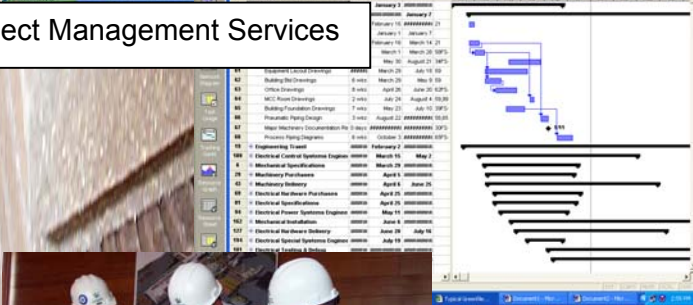
Preliminary Engineering & Cost Estimates



Detailed Engineering & Design



Project Management Services



Construction Management Services



Commissioning & Start-up Support



**Evergreen Engineering** has been active in WPC since our first project in 1997, preliminary engineering for an extruded panel plant designed for auto panels.

Recent projects include:

- Materials Preparation and handling for a WPC decking plant
- Fire safety reviews for two WPC decking plants for another manufacturer
- Process development support and market assessments for a WPC technology company
- Business planning for a wood products company
  - Wood flour from residuals
  - WPC compounded pellets
  - WPC products to complement existing product lines

We can support WPC manufacturers, wood products companies interested in entering the WPC market, technology companies, and others with any type of interest in WPC. We can address business strategy and marketing, product development, plant operations, and process and product technical issues.

Call **Evergreen** for information on our services and how we can help your company with WPC.

***We can do it all!***



**EVERGREEN ENGINEERING**

Eugene, Oregon (541) 484-4771 • Fax (541) 484-6759

[www.evergreenengineering.com](http://www.evergreenengineering.com)