

# SELECTED POWER DISTRIBUTION PROJECTS

PROJECT EXPERIENCE

## Thompson River Co-Gen, LLC

CoGeneration Facility  
Thompson Falls, Montana

- 13.2kV Distribution for Station, Boiler, & Sawmill Power
- 480V Distribution
- EDSA Power System Analysis
- 13.2-115kV Step-Up Substation & Tie-In to Utility 115kV Transmission Line
- Coordination of Power System Protection Relays

## California Agriboard, LLC

Willows, California

- 20.8kV Substation, (2) 20MVA Transformers, 5kV Distribution Switchgear
- 4.16 kV & 480V Distribution, (10) Secondary Unit Substations
- Complete SCADA Power Monitoring System
- Power Management System
- Large MV (8000HP) & LV Motor Starting Analysis
- Automatic Power Factor Correction
- Harmonics Reduction

## Louisiana-Pacific, Newberry, MI

- 12.47kV Distribution, 7.5MVA Total, (6) Secondary Unit Substations
- Power Short Circuit Analysis & Load Flow Analysis to Reduce Short-Circuit at 480V
- Power Factor Correction
- Large MV & LV Motor Starting Analysis

## Trus Joist, Junction City, Oregon & Elma, Washington

- Power Survey: Metering; Motor Database & Oneline Development
- Power Short Circuit Analysis & Load Flow Analysis
- Power Factor Correction

## Georgia Pacific Corp

MDF Plant (New Plant)  
Monticello, Georgia

- 12.47kV Distribution, 15MVA Total, (4) Secondary Unit Substations
- 4.16kV & 480V Distribution
- Complete SCADA Power Monitoring System
- Large MV & LV Motor Starting Analysis

## Pope & Talbot, Paper Mill

Halsey, Oregon

- Power System Analysis Included an Energy Audit, Load Flow & Short Circuit Analysis, Protective Device Coordination Study, & Large Motor Starting

## Oregon Steel Co., Steel Mill

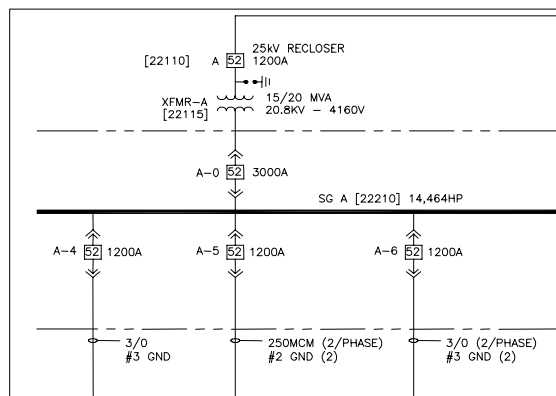
Portland, Oregon

- 12.47kV Distribution, 21MVA Total, (2) Secondary Unit Substations
- 4.16kV & 480V Distribution

## J.M. Huber

OSB Plant (New Plant)  
Whites Creek, Tennessee

- 12.47kV Distribution, 25MVA Total, (5) Secondary Unit Substations
- 4.1 6kV & 480V Distribution
- EDSA Short Circuit Analysis, Load Flow Analysis, & Coordination Scheme
- Power Factor Correction



## EVERGREEN ENGINEERING

Eugene, Oregon (541) 484-4771 • Fax (541) 484-6759  
Hillsboro, Oregon (503) 439-8777 • Fax (503) 439-8767

[www.evergreenengineering.com](http://www.evergreenengineering.com)